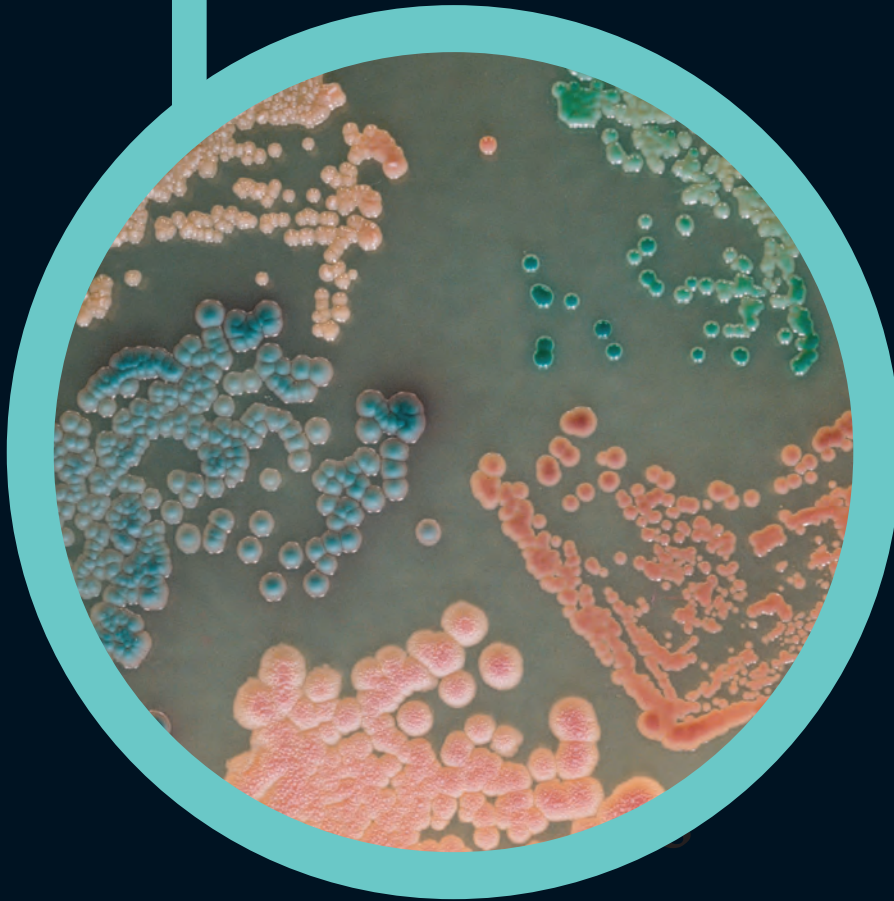
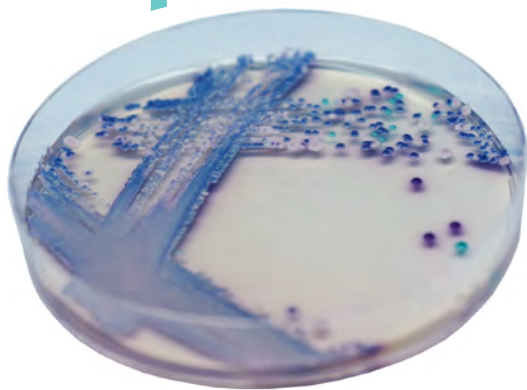


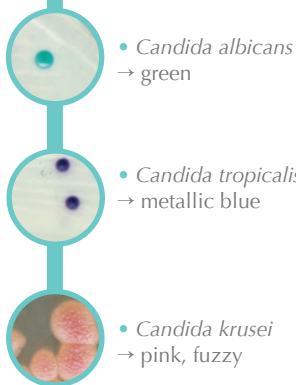
# ● CHROMagar™ Candida



For isolation and differentiation  
of major clinical-significant *Candida* species



## Plate Reading



• *Candida albicans*  
→ green

• *Candida tropicalis*  
→ metallic blue

• *Candida krusei*  
→ pink, fuzzy

## For isolation and differentiation of major clinical-significant *Candida* species

### Background

Perhaps as a result of progress in medical therapy with a related decrease in patient resistance and increase in the number of susceptible hosts, the incidence of bloodstream *Candida* infections rose through the 1990s but has stabilised in recent years. More commonly, *Candida* species are involved in superficial oropharyngeal and urogenital infections particularly for immuno-depressed people such as the elderly and AIDS victims. "Early diagnosis is essential for early effective management of the patients." WHO Guidelines on Standard Operating Procedures for Laboratory Diagnosis of HIV-Opportunistic Infections)

Although *C.albicans* remains the major species involved, other types such as *C.tropicalis*, *C.krusei* or *C.glabrata* have increased proportionately as new antifungal agents have worked very effectively against *C.albicans*. This shows the importance of an accurate detection for a proper antifungal therapy choice.

### Medium Performance

- 1 **HIGH CONTRAST**  
Intense colony colouration helping to differentiate species.
- 2 **FAST**  
48h incubation.
- 3 **PANORAMIC VIEW**  
Panoramic view of the *Candida* population mix with the ability to detect major species but also the presence of minor populations.
- 4 **POWERFUL TOOL**  
It displays high specificity and sensitivity for 3 of the major *Candida* species at a time.  
Specificity and sensitivity:  
*Candida albicans* → Exceed 99%\*  
*Candida tropicalis* → Exceed 99%\*  
*Candida krusei* → Exceed 99%\*  
\*Specificity and sensitivity from scientific study: "CHROMagar Candida, a new differential isolation medium for the presumptive identification of clinically important *Candida* species." Odds F. et al 1994, Journal of Clinical Microbiology, 32 : 1923-1929.
- 5 **LESS WORKLOAD**  
With traditional media such as Sabouraud agar, identification of mixed cultures is difficult, whereas CHROMagar™ *Candida*, just by the colour of the colony, will instantly differentiate various *Candida* species.
- 6 **CONVENIENT**  
Facilitates the choice of appropriate and optimised antifungal therapies.

### Medium Description

Powder Base	
Total .....	47.7 g/L
Agar .....	15.0
Peptone .....	10.2
Chromogenic mix .....	22.0
Chloramphenicol .....	0.5
Storage at 15/30°C - pH: 6.1 ± 0.2.	
Shelf Life .....	3 years

Usual Samples	skin, sputum, urine, vaginal specimens
Procedure	Direct Streaking. Incubation 48h, 30-37°C. Aerobic conditions.

Scientific Publications on this product: available on [www.CHROMagar.com](http://www.CHROMagar.com)  
For detailed preparation procedure, please refer to our IFU.

### Quality Control Strains

*C. krusei* ATCC® 14243 ..... pink and fuzzy  
*C. albicans* ATCC® 60193 ..... green  
*C. tropicalis* ATCC® 1369 ..... metallic blue  
*C. glabrata* ATCC® 2001 ..... mauve  
*E. coli* ATCC® 25922 ..... inhibited

ATCC® is a registered trademark of the American Type Culture Collection

### Order References

Please use these product references when contacting your local distributor:

1000 ml pack ..... CA220  
5000 ml pack ..... CA222  
25 L pack ..... CA223-25  
Bulk ..... on request

CHROMagar  
4 place du 18 juin 1940  
75006 Paris - France

Find your nearest distributor on  
[www.CHROMagar.com/contact](http://www.CHROMagar.com/contact)